

The logo for onvei, featuring the word "onvei" in a lowercase, sans-serif font. The "o" and "n" are dark grey, while the "v" and "e" are a lighter grey, and the "i" is dark grey with a dot.

Installation Guide

For Irrigation Valve 1 inch FJKZ003

Welcome!

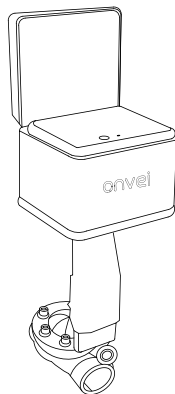
This guide will walk you through the installation of the Irrigation Valve 1 inch.

Start enjoying your smart home experience today!

Content

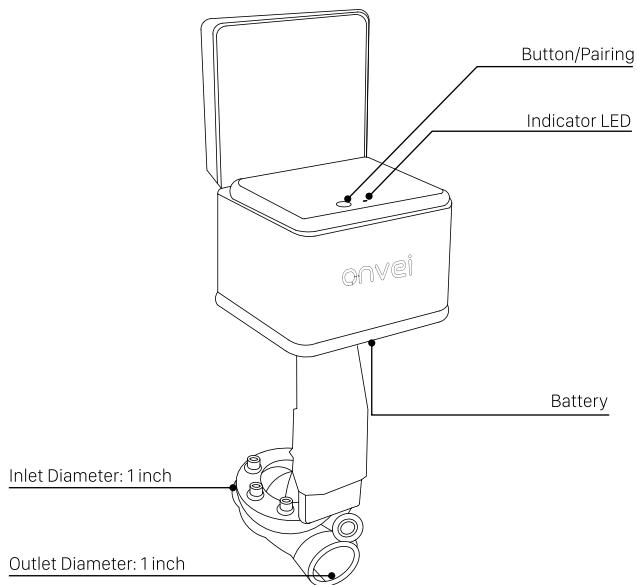
In The Box	2
Appearance	3
Set up Irrigation Valve 1 inch	4

In The Box



Irrigation Valve 1 inch(x1)

Appearance



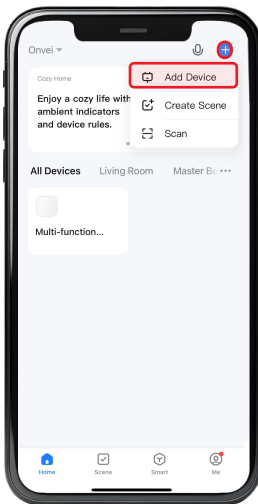
① Set up Irrigation Valve 1 inch

To control the Irrigation Valve 1 inch with a mobile device, install the Smart Life app. You can download the Smart Life app here.

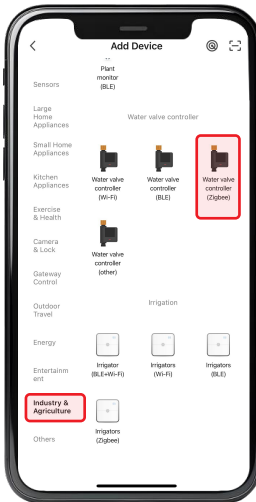


② Add Irrigation Valve 1 inch

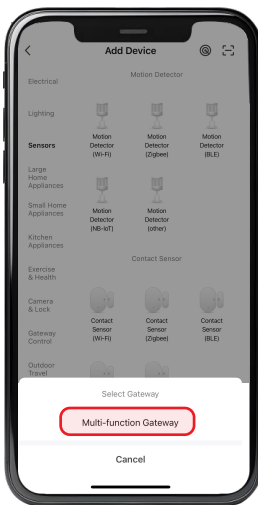
1. Launch the Smart Life app and follow the displayed instructions.
2. Add the gateway to the app according to the Multi-function Gateway Installation Guide.
3. Once the Multi-function Gateway is successfully added, click on "+" and select "Add Device".



4. Navigate to the "Industry & Agriculture" category and choose "Water Valve Controller Zigbee".

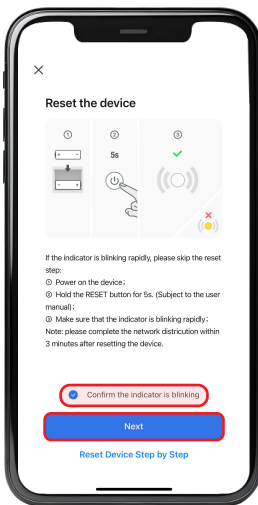


5. Select your gateway.

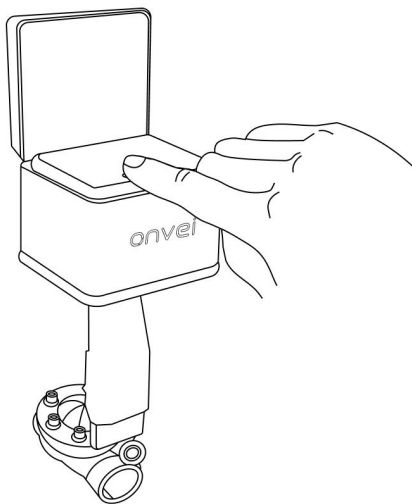


Note: The name of your gateway displayed in this section may differ from the name shown in this example image. It will display the name you have assigned to your device.

6. Select "Confirm the indicator is blinking" and click "Next".

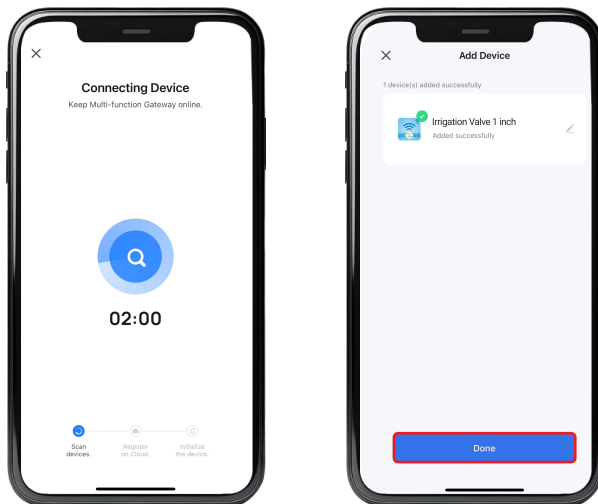


7. Connect the power to the device, The LED will flash rapidly. The device will automatically enter pairing mode



Note: Press and hold the button for 12 seconds to enter pairing mode. The blue LED will flash rapidly.

8. Wait for the app to detect and initialize the device.
9. After the device is detected and its name appears, click "Done".



Note: Ensure you are within a suitable range of the device to establish a stable connection.

Congratulations!

Your Irrigation Valve 1 inch installation is complete.

Start Enjoying Your Smart Home Experience Today!

onvei.com