



Installation Guide

For Scenario Button HO-011ZB

Welcome!

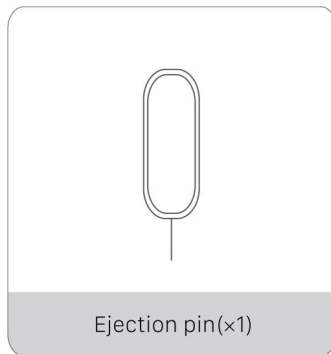
This guide will walk you through the installation of the Scenario Button.

Start enjoying your smart home experience today!

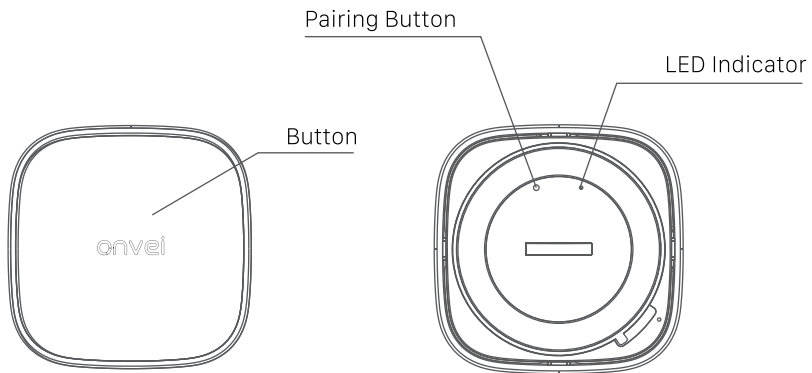
Content

In The Box	2
Appearance	3
Install Scenario Button	4
Set up Scenario Button	5

In The Box



Appearance

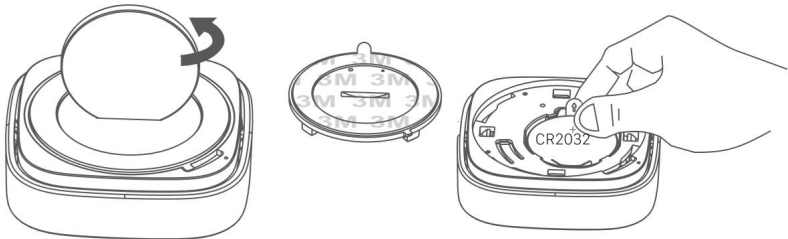


Install Scenario Button

Rotate the back cover of the product counterclockwise to open it.

Remove the battery insulation strip to activate the device.

Immediately upon removal, the blue LED will begin to flash rapidly, indicating that the device is now in pairing mode.



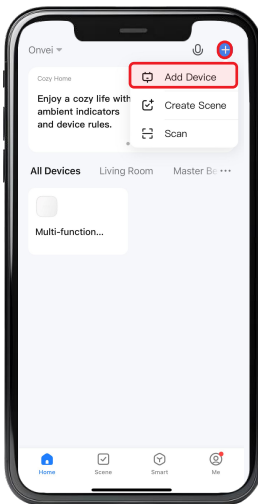
① Set up Scenario Button

To control the Scenario Button with a mobile device, install the Smart Life app. You can download the Smart Life app [here](#).

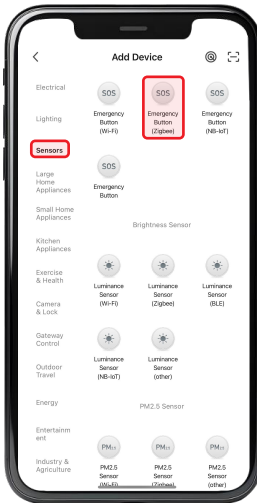


② Add Scenario Button

1. Launch the Smart Life app and follow the displayed instructions.
2. Add the gateway to the app according to the Multi-function Gateway Installation Guide.
3. Once the Multi-function Gateway is successfully added, click on "+" and select "Add Device".

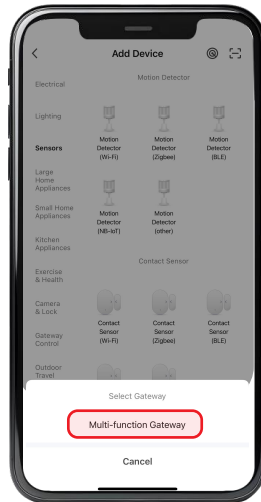


4. Navigate to the "Sensors" category and choose "Emergency Button Zigbee".

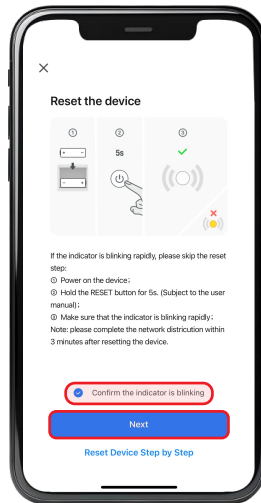


5. Select your gateway.

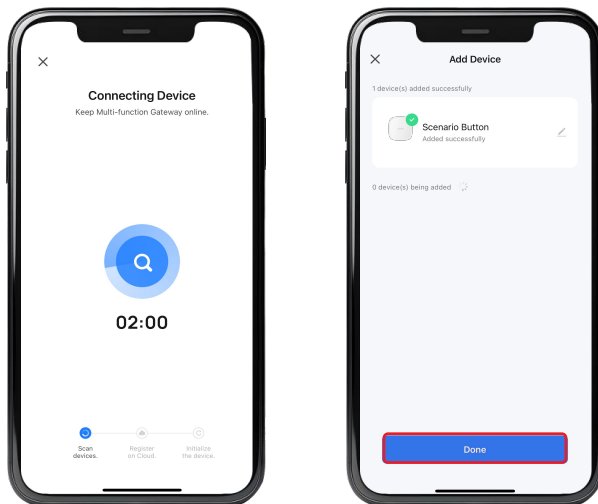
Note: The name of your gateway displayed in this section may differ from the name shown in this example image. It will display the name you have assigned to your device.



6. Select "Confirm the indicator is blinking" and click "Next".



7. Wait for the app to detect and initialize the device.
8. After the device is detected and its name appears, click "Done".



Note: Ensure you are within a suitable range of the device to establish a stable connection.

Congratulations!

Your Scenario Button installation is complete.

Start Enjoying Your Smart Home Experience Today!

onvei.com