



onvei
Installation Guide

For Smoke Sensor Zigbee LH-601ZB

Welcome!

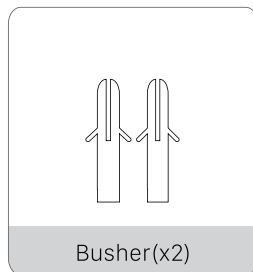
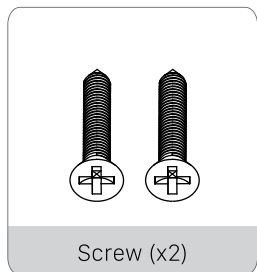
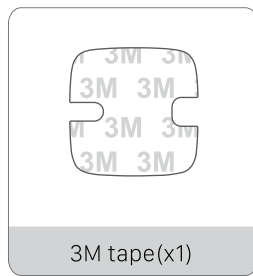
This guide will walk you through the installation of the Smoke Sensor Zigbee.

Start enjoying your smart home experience today!

Content

In The Box	2
Appearance	3
Install Smoke Sensor Zigbee	4
Set up Smoke Sensor Zigbee	8

In The Box



Appearance

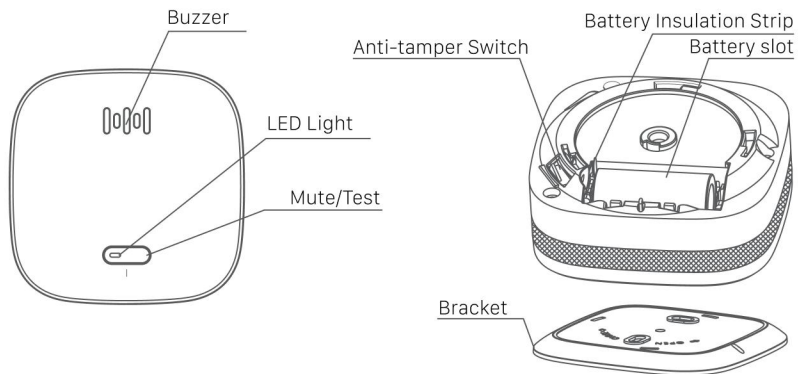


Diagram of back after removal of bracket

Install Smoke Sensor Zigbee

Install Indoors Only: Mount the product on indoor ceilings only.

Corridor Placement: Install one in each corridor outside bedrooms; install additional units in corridors facing multiple bedrooms.

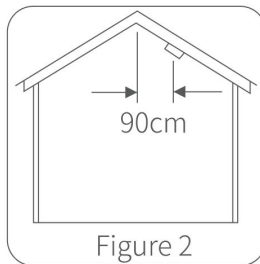
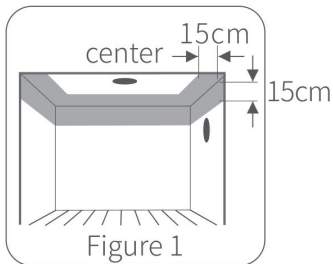
Coverage for Long Areas: Install one unit at each end of corridors or rooms longer than 12 meters.

Multiple Floors: Install a unit on each floor, including lofts and basements.

Avoid Obstructions: Keep the unit at least 50 cm away from lamps or decorations and 15-30 cm from corners.

Slanted Ceilings: Install the unit 90 cm away from the top if the ceiling is slanted.

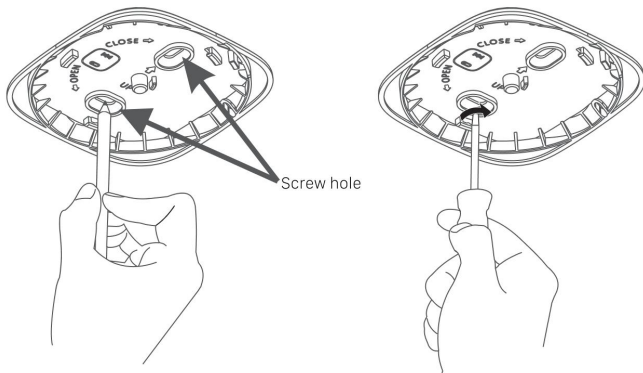
Note : The grey area is not recommended to install.



Note: Use screws for installation to prevent accidents; adhesive methods are less secure.

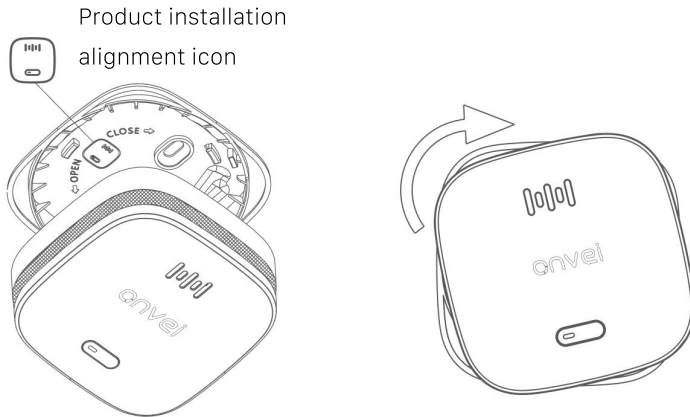
Installation Instruction I

1. **Marking and Drilling:** At the selected installation spot on the ceiling or wall, mark the center points of the two holes on the bracket. Drill holes at these marks using the appropriate drill bit, then insert the roll plugs until they are flush with the surface of the ceiling or wall.
2. **Bracket Installation:** Use the two screws provided in the accessories bag to securely attach the bracket to the ceiling or wall.



Note: Keep the sensor away from dust during drilling.

3. Align the body of the product with the "Product Installation Icon" marked on the bracket. Gently rotate the product body clockwise until you hear a distinct "click" sound. This confirms that the product is securely locked into the bracket.

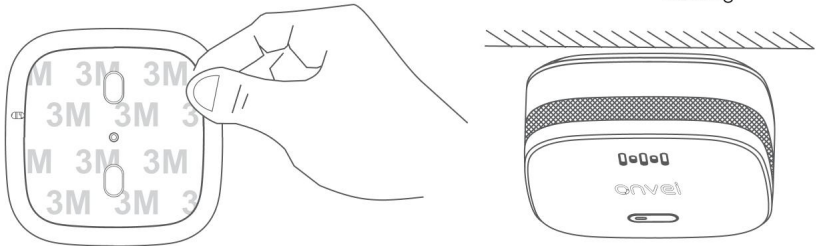


Product installation alignment icon side view

Product installation alignment icon front view

Installation Instruction II

1. Prepare the 3M Tape: Begin by removing the protective film from one side of the 3M tape.
2. Attach Tape to Bracket: Affix the exposed side of the 3M tape securely to the back of the bracket, ensuring it is aligned properly and covers the area evenly.
3. Position on Ceiling: Once the tape is in place, remove the protective film from the other side of the 3M tape. Carefully position the bracket against the ceiling where you want to install the product. Press firmly for 30 seconds to ensure strong adhesion.



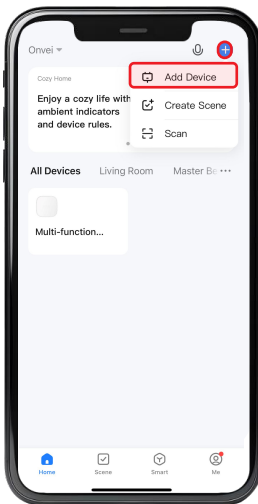
① Set up Smoke Sensor Zigbee

To control the Smoke Sensor Zigbee with a mobile device, install the Smart Life app. You can download the Smart Life app here.

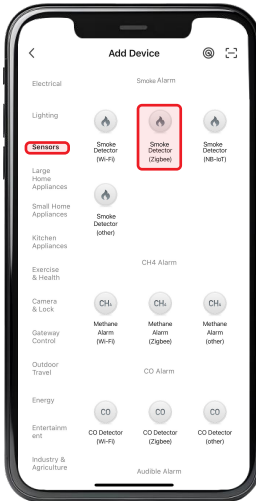


② Add Smoke Sensor Zigbee

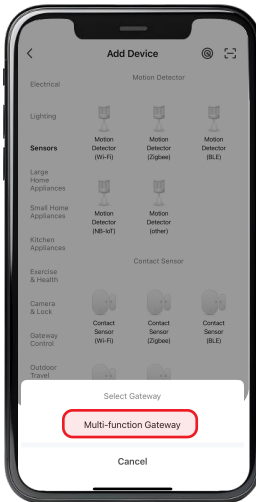
1. Launch the Smart Life app and follow the displayed instructions.
2. Add the gateway to the app according to the Multi-function Gateway Installation Guide.
3. Once the Multi-function Gateway is successfully added, click on "+" and select "Add Device".



4. Navigate to the "Sensors" category and choose "Smoke Detector Zigbee".

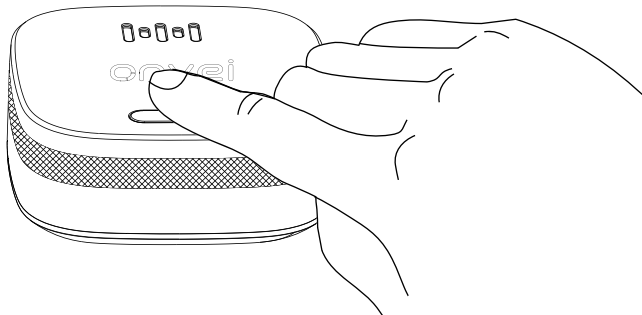


5. Select your gateway.

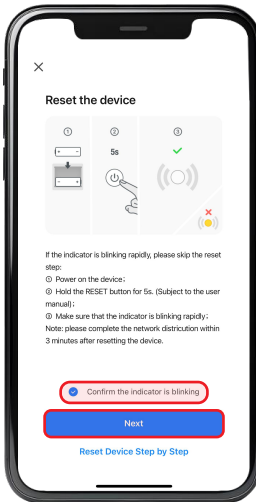


Note: The name of your gateway displayed in this section may differ from the name shown in this example image. It will display the name you have assigned to your device.

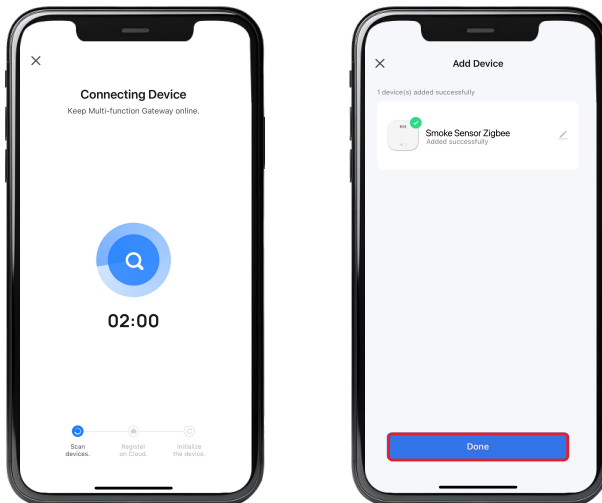
6. Press and hold the "Mute/Test" button for 12 seconds to allow the device to enter pairing mode. The green LED will then flash rapidly.



7. Select "Confirm the indicator is blinking" and click "Next".



8. Wait for the app to detect and initialize the device.
9. After the device is detected and its name appears, click "Done".



Note: Ensure you are within a suitable range of the device to establish a stable connection.

Congratulations!

Your Smoke Sensor Zigbee installation is complete.

Start Enjoying Your Smart Home Experience Today!

onvei.com