

The logo for onvei, featuring the word "onvei" in a lowercase, sans-serif font. The "o" and "n" are dark green, while the "v", "e", and "i" are white. The background is a solid dark green with large, white, abstract speech bubble shapes.

Installation Guide

For Soil Moisture and Temperature Sensor FJKZ007

Welcome!

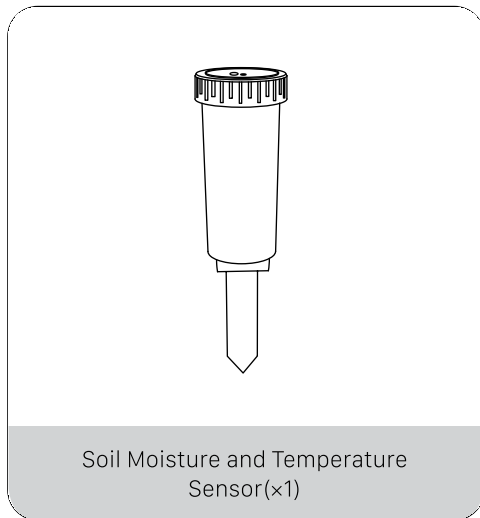
This guide will walk you through the installation of the Soil Moisture and Temperature Sensor.

Start enjoying your smart home experience today!

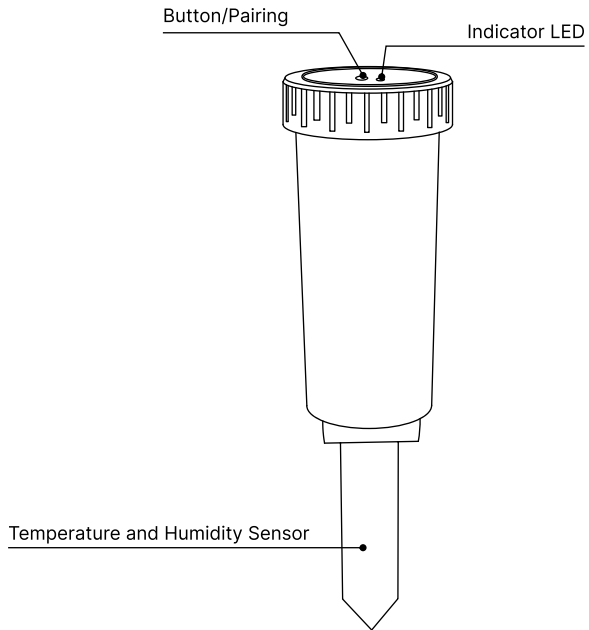
Content

In The Box	2
Appearance	3
Set up Soil Moisture and Temperature Sensor	4

In The Box



Appearance



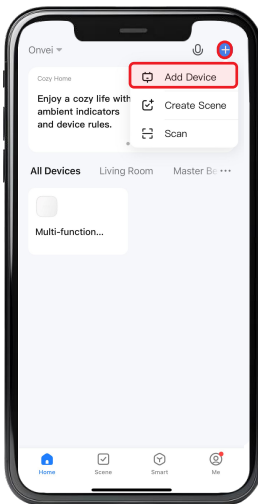
① Set up Soil Moisture and Temperature Sensor

To control the Soil Moisture and Temperature Sensor with a mobile device, install the Smart Life app. You can download the Smart Life app here.

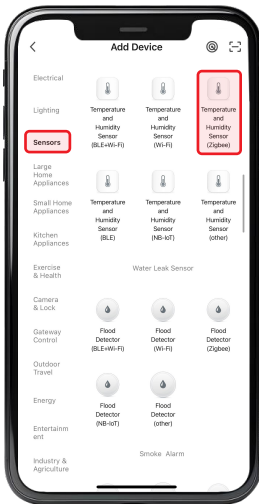


② Add Soil Moisture and Temperature Sensor

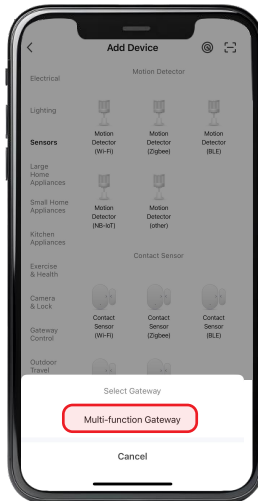
1. Launch the Smart Life app and follow the displayed instructions.
2. Add the gateway to the app according to the Multi-function Gateway Installation Guide.
3. Once the Multi-function Gateway is successfully added, click on "+" and select "[Add Device](#)".



4. Navigate to the "Sensors" category and choose "Temperature and Humidity Sensor Zigbee".

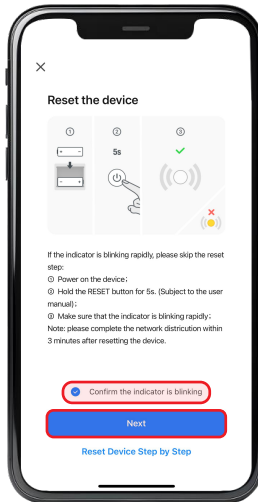


5. Select your gateway.

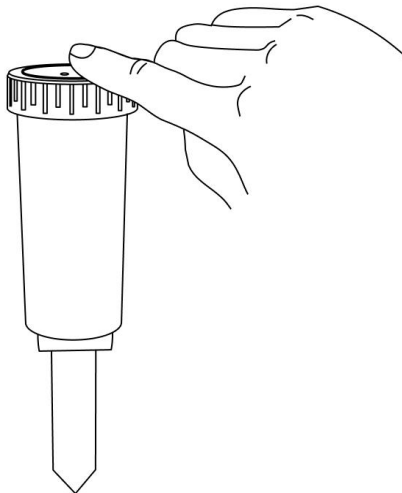


Note: The name of your gateway displayed in this section may differ from the name shown in this example image. It will display the name you have assigned to your device.

6. Select "Confirm the indicator is blinking" and click "Next".

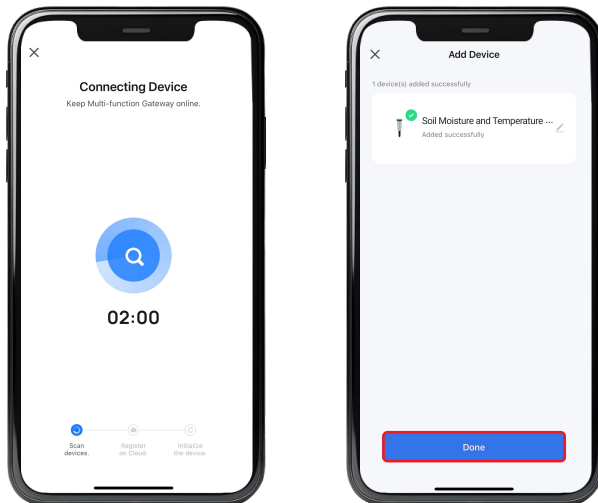


7. Connect the power to the device, The LED will flash rapidly. The device will automatically enter pairing mode



Note: Press and hold the button for 12 seconds to enter pairing mode. The blue LED will flash rapidly.

8. Wait for the app to detect and initialize the device.
9. After the device is detected and its name appears, click "Done".



Note: Ensure you are within a suitable range of the device to establish a stable connection.

Congratulations!

Your Soil Moisture and Temperature Sensor installation is complete.

Start Enjoying Your Smart Home Experience Today!

onvei.com