

The logo for onvei, featuring the word "onvei" in a lowercase, sans-serif font. The "o" and "n" are dark blue, while the "v", "e", and "i" are white. The background is a solid teal color with large, white, abstract speech bubble shapes.

# Installation Guide

For Wireless Scene Switch 4 Button ESW-OZAA-EU

# Welcome!

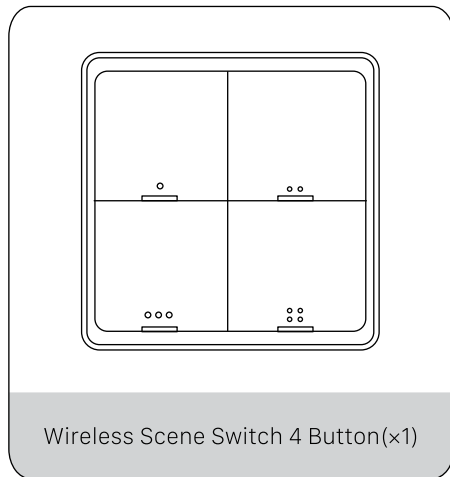
This guide will walk you through the installation of the Wireless Scene Switch 4 Button.

Start enjoying your smart home experience today!

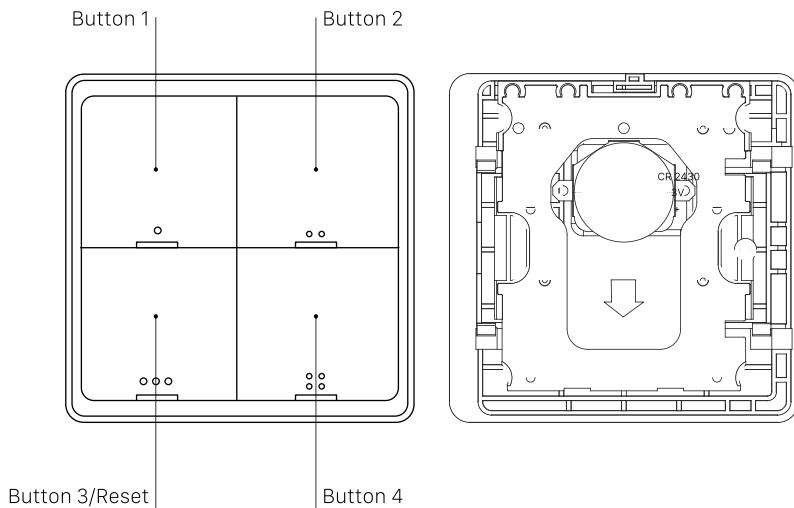
## Content

In The Box .....	2
Appearance .....	3
Install Wireless Scene Switch 4 Button .....	4
Set up Wireless Scene Switch 4 Button .....	5

## In The Box

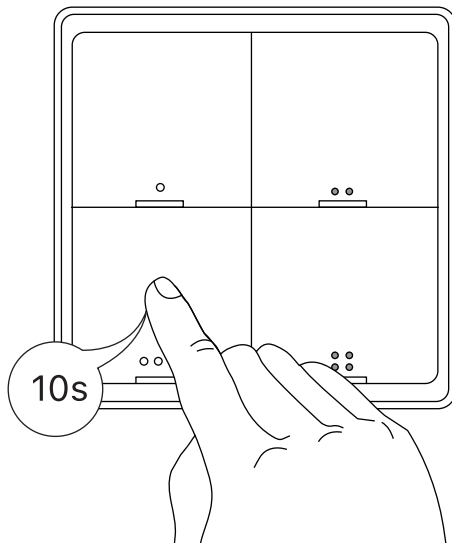


# Appearance



## Install Wireless Scene Switch 4 Button

Press and hold switch button 3 for 10 seconds. When the indicator LED begins to flash, the switch will enter Pairing Mode.



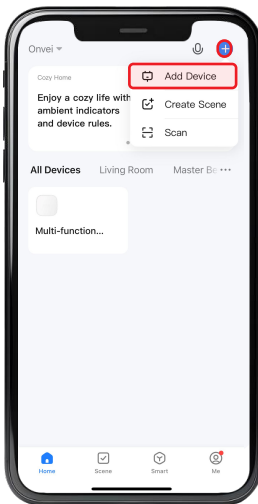
## ① Set up Wireless Scene Switch 4 Button

To control the Wireless Scene Switch 4 Button with a mobile device, install the Smart Life app. You can download the Smart Life app here.

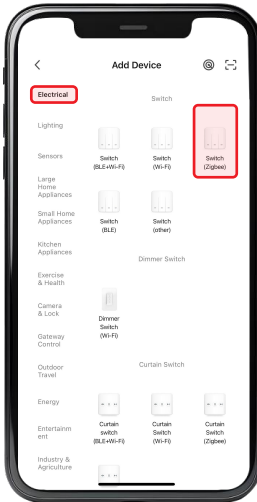


## ② Add Wireless Scene Switch 4 Button

1. Launch the Smart Life app and follow the displayed instructions.
2. Add the gateway to the app according to the Multi-function Gateway Installation Guide.
3. Once the Multi-function Gateway is successfully added, click on "+" and select "Add Device".



4. Navigate to the "Electrical" category and choose "Switch Zigbee".



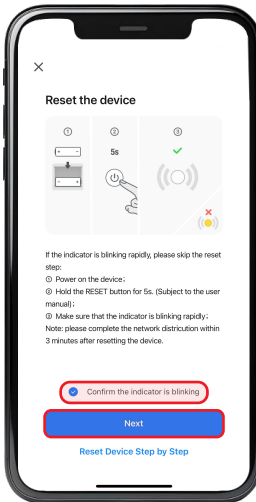


5. Select your gateway.

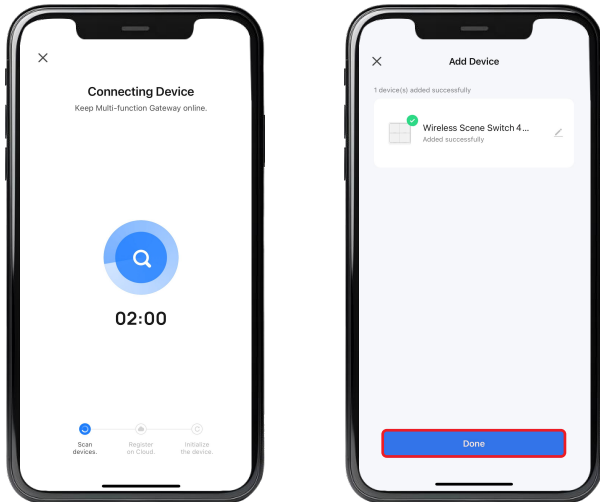


**Note:** The name of your gateway displayed in this section may differ from the name shown in this example image. It will display the name you have assigned to your device.

6. Select "Confirm the indicator is blinking" and click "Next".



7. Wait for the app to detect and initialize the device.
8. After the device is detected and its name appears, click "Done".



**Note:** Ensure you are within a suitable range of the device to establish a stable connection.

# Congratulations!

Your Wireless Scene Switch 4 Button installation is complete.

Start Enjoying Your Smart Home Experience Today!

[onvei.com](http://onvei.com)